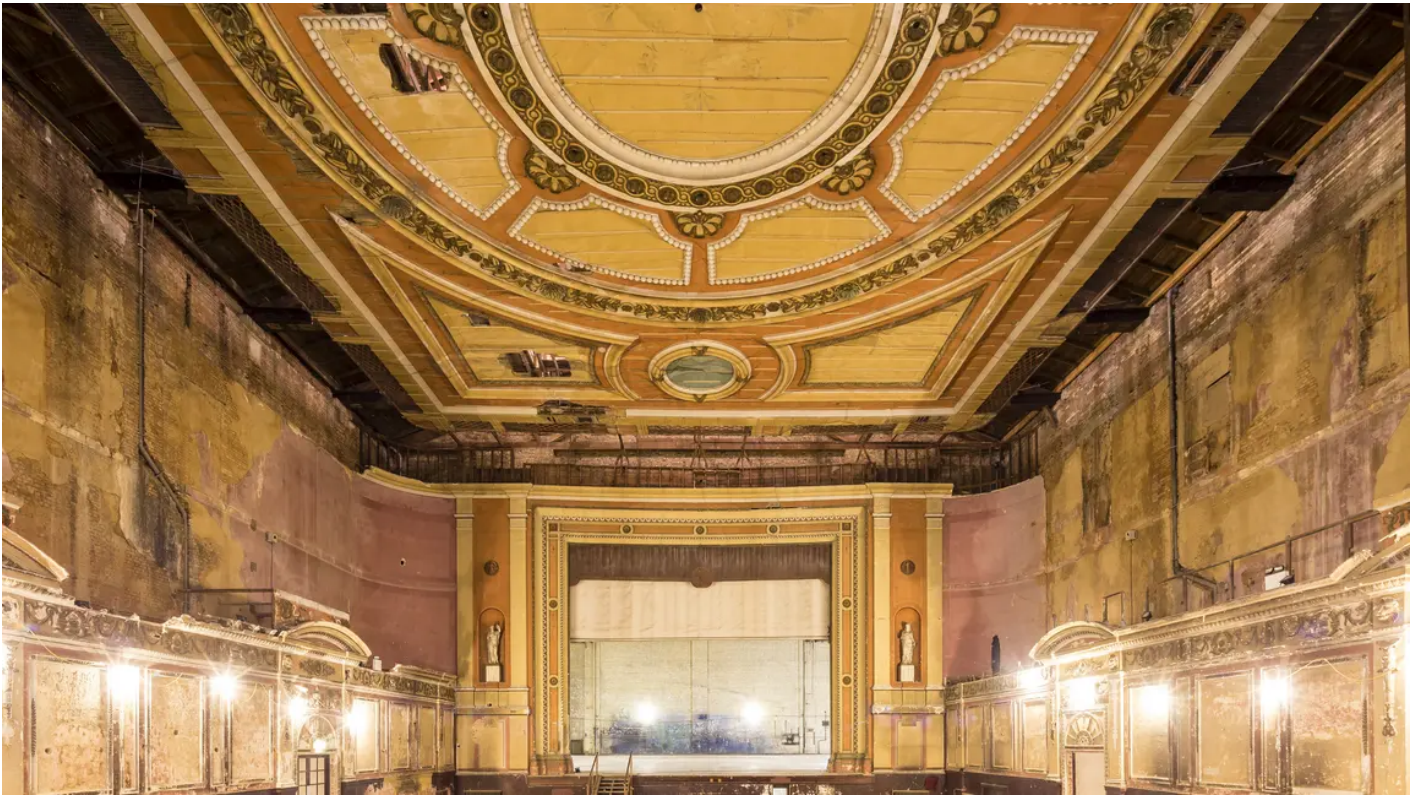


# Ally Pally to entertain once more

25/03/2015



The interior of the stunning Victorian theatre at Alexandra Palace  
Looking out over London, the 140-year old Alexandra Palace - or Ally Pally as it affectionately known – has been at the heart of the British entertainment industry ever since it was first constructed.

Nicknamed the 'People's Palace', it was built to provide the people of North London with a magnificent cultural and recreational centre and contained a concert hall, art galleries, a museum and large theatre.

In the 1930s, the BBC leased part of the Palace and it became home to the world's first high definition television service. Before the outbreak of the Second World War, the BBC experimented with developing variety shows and outside broadcasts from the site - only transmitting to the homes surrounding the Palace.

[quote: Carole Souter] "Lottery funding is heralding a new chapter for this iconic building" [/quote]

Television programmes were made at Ally Pally until the 1980s but since the TV companies moved out, the Eastern End has stood empty and derelict.

Now, we are investing nearly £19million to restore the most historical parts of the building and reopen them to the public.

Drawing on the BBC's rich archives, the former studios will be used to tell the remarkable story of the birth of television using footage and objects from the time.

The Palace's stunning hidden theatre – inaccessible for 60 years - will also be brought back to life as a space for theatrical performances, cinema screenings and live comedy and music.

HLF's Chief Executive Carole Souter said that: "Lottery funding is heralding a new chapter for this iconic building, creating an inspirational space where people can learn about its rich and colourful history."