

Attention! National Army Museum marches towards opening date

23/01/2017



New-look exterior of the National Army Museum National Army Museum

The National Army Museum in London will re-open to the public on 30 March 2017 after major redevelopment.

With the help of £11.5million from National Lottery players, the National Army Museum has been reconfigured to create a more welcoming and flexible environment. This will enable it to manage an increasing number of visitors, predicted to reach 400,000 per year by 2026.

[quote=Sir Peter Luff, Chair of HLF]“The National Army Museum [has] always been a great place to learn about the British Army’s role in military and civilian life but it now has an inspiring new energy and purpose.”[/quote]

Aiming to be a bridge between the British Army and society, the Museum will encourage greater public engagement with ideas of defence and security, both past and present.

Sir Peter Luff, Chair of HLF, said: "The National Army Museum is quite literally transformed. It’s always been a great place to learn about the British Army’s role in military and civilian life but it now has an inspiring new energy and purpose.

"The clean, spacious design should please regular visitors and also attract a whole new audience. We're sure this will include many National Lottery players who have made such a big contribution to the site’s redevelopment."

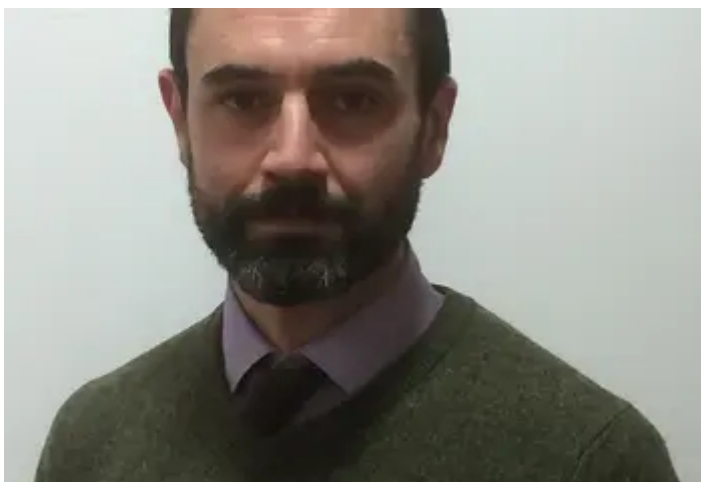
New themed galleries

The new building will include over 2,500 objects in five permanent thematic galleries, laid out over four floors: Soldier, Army, Battle, Society and Insight. There will also be a 500m sq temporary exhibition space, a study centre and a three-room learning centre, as well as a brand new café, shop and Play Base, where children can learn through play.

Janice Murray, Director General of the National Army Museum, said: “The thematic galleries provide a space to explore and discuss the army and its relevance to society in ways that we sometimes would not imagine, from fashion and films to flood defences and, of course, conflict.”

Global connections

Intended as a regularly changing exhibition, the gallery’s displays look at the army’s connection with Germany, Scotland, the Punjab, Ghana and Sudan. Communities from these areas have been involved in the creation of the gallery, sharing thoughts on their relationship with Britain, the army and the objects within the Museum’s collection.



rdeb hefyd mewn ...

[Tristan Langlois, Head of Learning at the National Army Museum](#)

[**Building for the future at the National Army Museum**](#)