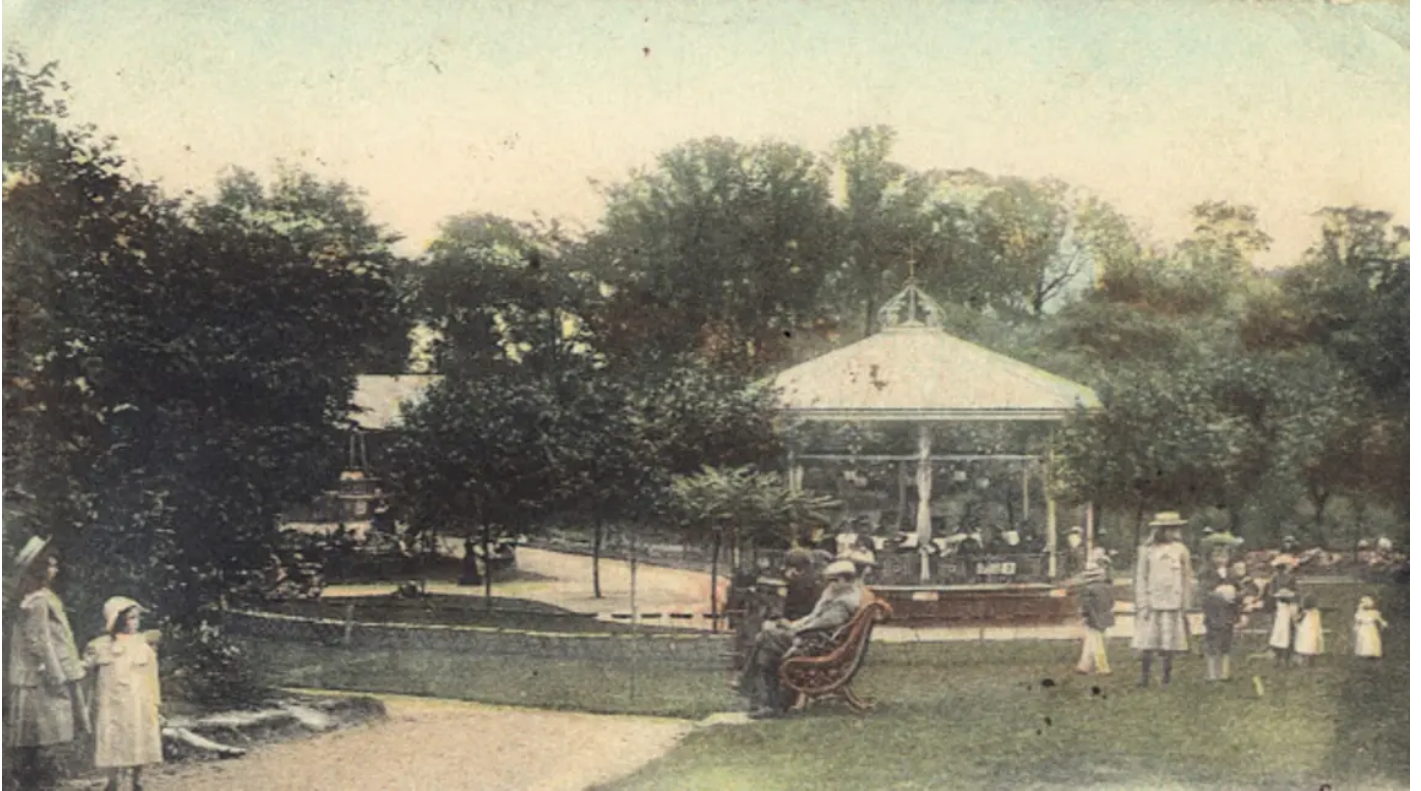


National Lottery money to revive six public parks

15/01/2019



Ellington Park - Bandstand in 1904 Bath in Time

Vital investment in six parks will restore at-risk historic features, protect threatened nature and wildlife, and significantly boost opportunities for enterprise, communities, health and wellbeing.

Public parks are crucial community spaces, well-used and much-loved by people from all walks of life and full of memories. The role they play in physical and mental wellbeing is indispensable.

They are also home to some of the country's most cherished heritage and provide essential habitats for Britain's vulnerable wildlife.

[quote=Ros Kerlake, HLF Chief Executive]"From improving health and wellbeing to forging business enterprises, parks offer many benefits and opportunities."[/quote]

Jane Austen's much loved park in Bath is one of six to share £13.8million. Amid the parks can be found a medieval castle, breathtaking costal vistas, lakes for water sports, Georgian temples and loggias and First World War memorials.

Abundant wildlife can be found in their rivers, lakes, gardens and green spaces, including endangered pollinating insects and glass eels – the latter classified as one of the UK's most

threatened species.

Parks have been home to the spirit of innovation and enterprise down the years, with numerous community and commercial activities taking place within them.

Safeguarding heritage and wildlife in English parks

With this funding these parks will continue in this enterprising tradition, building partnerships between councils, businesses, charities and community groups to better serve their local areas and safeguard the park's heritage and wildlife going forwards.

The National Lottery money has been awarded jointly by HLF and Big Lottery Fund England. The six parks receiving funding are:

- South Cliff Gardens in Scarborough's South Bay - £4.66m
- Castle Park in Bishop's Stortford, Hertfordshire - £1.94m
- Sydney Gardens in Bath - £2.74m
- Fairhaven Lake and Gardens on the Fylde coast, Lancashire £1.47m
- Ellington Park in Ramsgate, Kent - £1.64m
- Stevens Park in Dudley - £1.4m

HLF's Chief Executive, Ros Kerlake, said: "From improving health and wellbeing, to forging business enterprises, parks offer many benefits and opportunities. Over £960m of National Lottery money has been invested in regenerating parks and urban green spaces so far and they remain a priority into the future."



ddordeb hefyd mewn ...

[Kearsney Abbey and Russell Gardens is celebrating a Parks for People grant](#)

[Love Parks Week: funding joy for our parks](#)

[Brent Borough of Culture 2020](#)